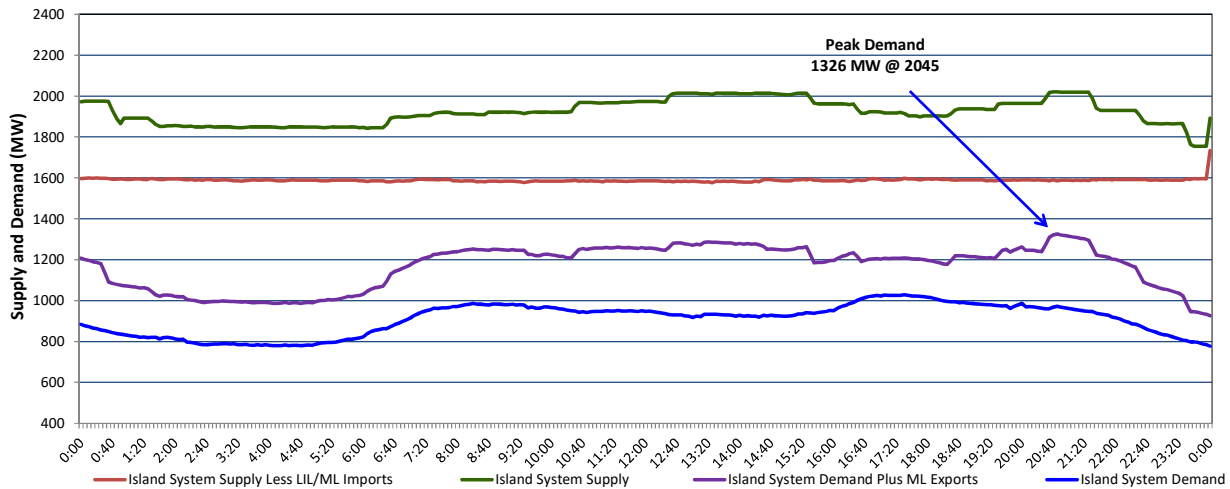


## Newfoundland Labrador Hydro (NLH) Supply and Demand Status Report Filed Wednesday, December 20, 2023

### Section 1 Island Interconnected System Supply, Demand & Exports Actual 24 Hour System Performance For Tuesday, December 19, 2023



#### Supply Notes For December 19, 2023

1,2

- A As of 0800 hours, May 21, 2023, Holyrood Unit 2 unavailable due to forced extension to planned outage (170 MW).
- B As of 2059 hours, July 13, 2023, Stephenville Gas Turbine unavailable (50 MW).
- C As of 1833 hours, December 16, 2023, Holyrood Unit 3 available at 70 MW (150 MW).
- D At 0750 hours, December 19, 2023, Paradise River Unit unavailable due to planned outage (8 MW).
- E At 1641 hours, December 19, 2023, Paradise River Unit available (8 MW).
- F At 2355 hours, December 19, 2023, Holyrood Unit 1 available 140 MW (170 MW).

### Section 2 Island Interconnected Supply and Demand

Wed, Dec 20, 2023	Island System Outlook <sup>3</sup>	Seven-Day Forecast	Temperature (°C)		Island System Daily Peak Demand (MW)	
			Morning	Evening	Forecast	Adjusted <sup>7</sup>
Available Island System Supply: <sup>5</sup>	2,144 MW	Wednesday, December 20, 2023	10	8	1,460	1,363
NLH Island Generation: <sup>4,8</sup>	1,365 MW	Thursday, December 21, 2023	7	6	1,130	1,037
NLH Island Power Purchases: <sup>6</sup>	130 MW	Friday, December 22, 2023	2	0	1,325	1,230
Other Island Generation:	225 MW	Saturday, December 23, 2023	-3	-5	1,380	1,284
ML/LIL Imports:	424 MW	Sunday, December 24, 2023	-1	0	1,315	1,220
Current St. John's Temperature & Windchill:	9 °C	Monday, December 25, 2023	-3	-1	1,345	1,249
7-Day Island Peak Demand Forecast:	1,460 MW	Tuesday, December 26, 2023	-2	-2	1,415	1,319

#### Supply Notes For December 20, 2023

3

- Notes:
- Generation outages for running and corrective maintenance are included. These are not unusual for power system operations. They generally do not impact customer supply. The power system operators schedule outages to system equipment whenever possible to coincide with periods when customer demands are low and sufficient supply reserves are available. However, from time to time equipment outages are necessary and reserves may be impacted.
  - Due to the Island system having no synchronous connections to the larger North American grid, when there is a sudden loss of large generating units there may be a requirement for some customer's load to be interrupted for short periods to bring generation output equal to customer demand. This automatic action of power system protection, referred to as under frequency load shedding (UFLS), is necessary to ensure the integrity and reliability of system equipment. Under frequency events have typically occurred 5 to 8 times per year on the Island Interconnected System and the resultant customer load interruptions are generally less than 30 minutes. With the activation of the Maritime Link frequency controller during the winter of 2018, UFLS events have occurred less frequently.
  - As of 0800 Hours.
  - Gross output including station service at Holyrood (24.5 MW) and improved NLH hydraulic output due to water levels (35 MW).
  - Gross output from all Island sources (including Note 4).
  - NLH Island Power Purchases include: CBPP Co-Gen, Nalcor Exploits, Rattle Brook, Star Lake, Wind Generation and capacity assistance (when applicable).
  - Adjusted for curtailable load, market activities and the impact of voltage reduction when applicable.
  - Due to limitations inherent in the design of combustion turbines, the output of combustion turbines may be reduced in the event that ambient temperatures exceed the threshold

### Section 3 Island Peak Demand Information Previous Day Actual Peak and Current Day Forecast Peak

Tue, Dec 19, 2023	Actual Island Peak Demand <sup>9</sup>	20:45	1,326 MW
Wed, Dec 20, 2023	Forecast Island Peak Demand		1,460 MW

- Notes: 9. Island Demand / LIL / ML Exports (where applicable) is supplied by NLH generation and purchases, plus generation owned and operated by Newfoundland Power and Corner Brook Pulp & Paper (Deer Lake Power, DLP).